



CONSERVANCY

About the Washington Square Park Conservancy



The Washington Square Park Conservancy (WSPC) is a not for profit that engages volunteers and raises funds to keep the park clean, safe and beautiful.

The WSPC works with the New York City Parks Department, which is responsible for all operational management and policy decisions regarding the Park.



WSPC Info

Formed in 2012 by neighborhood residents hoping to keep the newly renovated park clean, safe and beautiful.

Our board, with input from NYC Parks Staff, makes decisions about additional support for the park. WSPC does not manage park operations.

Sarah, our ED, serves as the Parks Administrator and is a paid NYC Parks employee.

Park Stats

- 1827 – year officially became a park
- 9.75 - # of acres
- 54,000 – visits on a sunny spring weekday
- 45,000 – visits on a sunny summer weekday
- 12 million – approximate # of visits/year
- 200 – # of children in the playground/day in summer
- 850 –bags of garbage removed/week in summer



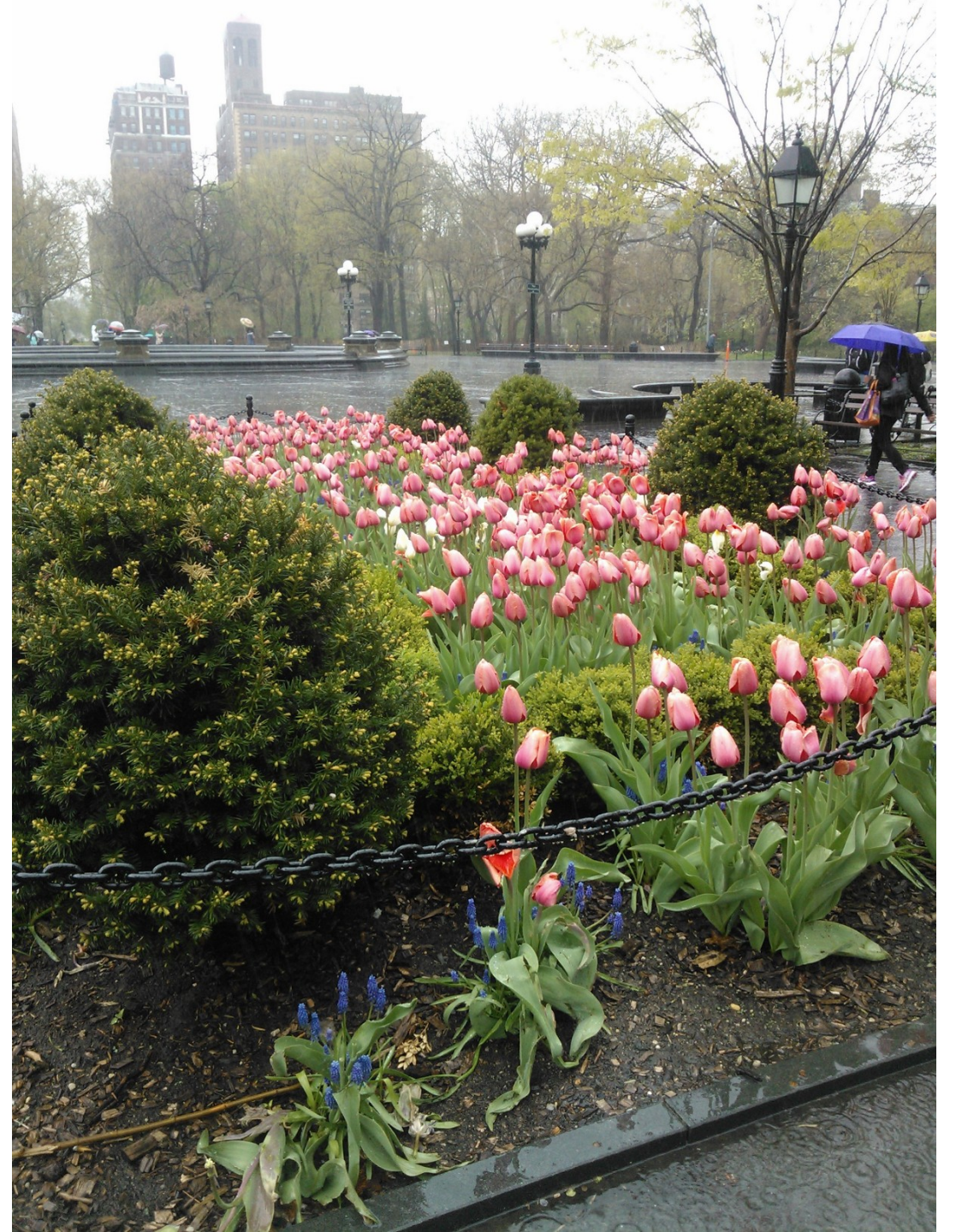
WSPC Conservancy Programs

Horticulture

- The Conservancy supports a full-time gardener dedicated to Washington Square Park
- WSPC provides the labor and the plant materials annually for seven formal beds in the park







WSPC Conservancy Programs

Horticulture

- The Conservancy supports a full-time gardener dedicated to Washington Square Park
- WSPC provides the labor and the plant materials annually for seven formal beds in the park

Maintenance

- The Conservancy supports two seasonal workers for afternoon/evening shifts for trash removal and comfort station maintenance.



WSPC Conservancy Programs

Horticulture

- The Conservancy supports a full-time gardener dedicated to Washington Square Park
- WSPC provides the labor and the plant materials annually for seven formal beds in the park

Maintenance

- The Conservancy supports two seasonal workers for afternoon/evening shifts for trash removal and comfort station maintenance.

Seasonal Park Programming

- Playground Associates – recreation staffers in the park's large playground



WSPC Conservancy Programs

Horticulture

- The Conservancy supports a full-time gardener dedicated to Washington Square Park
- WSPC provides the labor and the plant materials annually for seven formal beds in the park

Maintenance

- The Conservancy supports two seasonal workers for afternoon/evening shifts for trash removal and comfort station maintenance.

Seasonal Park Programming

- Playground Associates – recreation staffers in the park's large playground
- Volunteer Opportunities – we help interested people give back to the park through our volunteer horticulture and welcome programs



WSPC Conservancy Programs

Horticulture

- The Conservancy supports a full-time gardener dedicated to Washington Square Park
- WSPC provides the labor and the plant materials annually for seven formal beds in the park

Maintenance

- The Conservancy supports two seasonal workers for afternoon/evening shifts for trash removal and comfort station maintenance.

Seasonal Park Programming

- Playground Associates – recreation staffers in the park's large playground
- Volunteer Opportunities – we help interested people give back to the park through our volunteer horticulture and welcome programs
- Mini-Grants Program – supports cultural programming in the park



WSPC Conservancy Programs

Horticulture

- The Conservancy supports a full-time gardener dedicated to Washington Square Park
- WSPC provides the labor and the plant materials annually for seven formal beds in the park

Maintenance

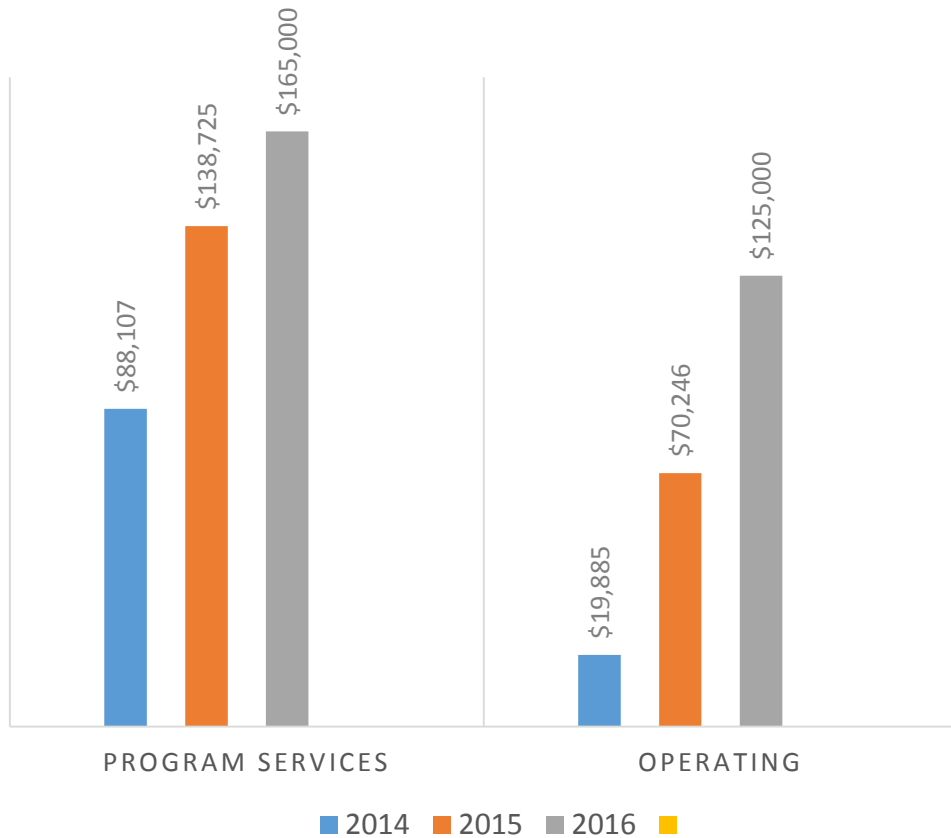
- The Conservancy supports two seasonal workers for afternoon/evening shifts for trash removal and comfort station maintenance.

Seasonal Park Programming

- Playground Associates – recreation staffers in the park's large playground
- Volunteer Opportunities – we help interested people give back to the park through our volunteer horticulture and welcome programs
- Mini-Grants Program – supports cultural programming in the park
- Welcome Program – greeters answer questions and conduct weekly tours for park visitors



WSPC Budget-Income Sources



Individuals

Grants,
foundation and
government

Special Events

Businesses and
Institutions

Volunteer Stats

- 85 volunteers in 2015
- Served 250 hours
- Horticulture volunteers
- Welcome volunteers
- Weekly Gardeners – starting soon
- 6,700 bulbs planted fall of 2015



WSPC People

- Sheryl and Sarah – staff
- Voting Board
 - local community members
 - NYC Parks Staff
- Nonvoting Board
 - District 1 Councilmember
 - Community Board 2 Chair



How the Public can Connect with Us

Follow us on Social Media

 washingtonsquareparkconservancy

 @wspconservancy

 @wspconservancy

Sign up for our e-newsletter, get information on in-park events, and learn more:

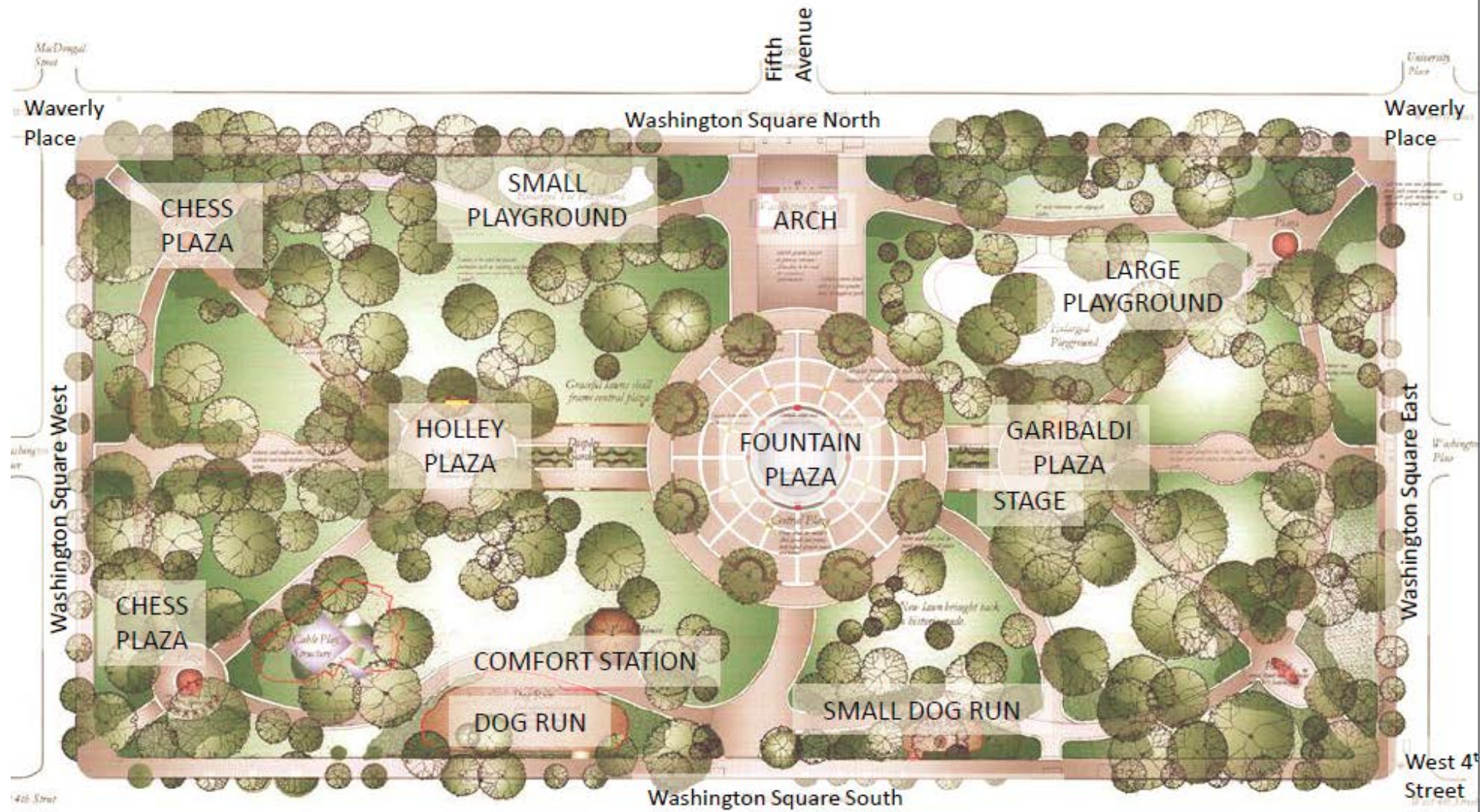
www.washingtonsquareparkconservancy.org



Welcome Program

- June - October
- Saturday mornings
- 10AM-1PM
- General Park Questions
- General Neighborhood Questions





Washington Square Park



CONSERVANCY